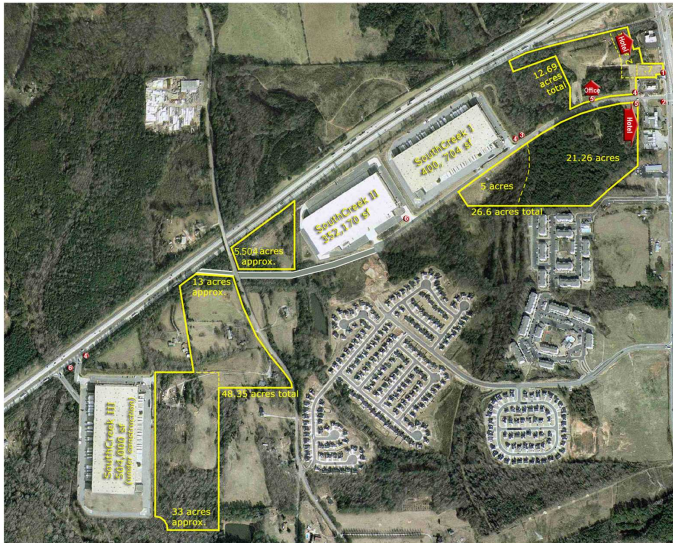
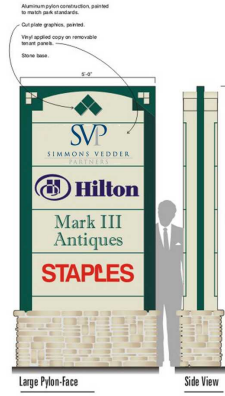


SouthCreek Signage Standards

Fairburn, GA



Sign 1



Signage Criteria
General Information:

All signage and graphics must be submitted to David Arnow for final approval, prior to signage construction.

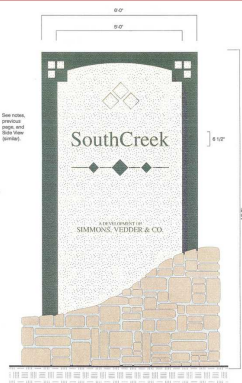
In order to maintain a continuity to the signage, all signage must be produced and constructed by:

Mr. Arthur McIntyre
 JPB & Associates
 2030 Powers Ferry Road
 Suite 232
 Atlanta, Georgia 30339
 (770) 953-4347
 ajiii@ellijay.com

Sign 2



*This will ultimately have a retailer's name below "SouthCreek"

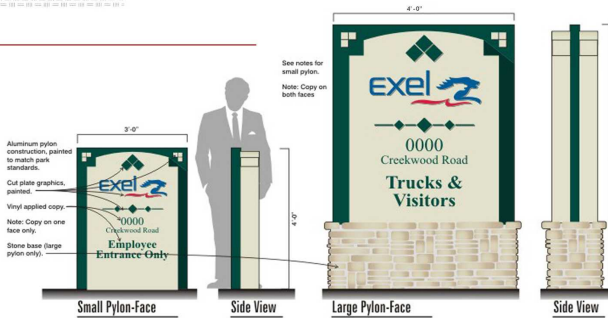


Sign 3

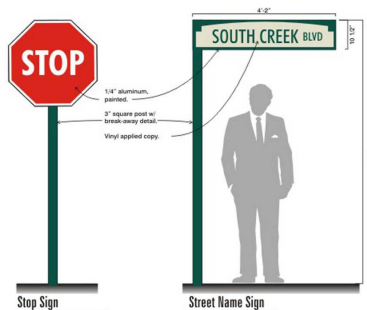


Sign 5 - Commercial sites between 1 and 3 acres

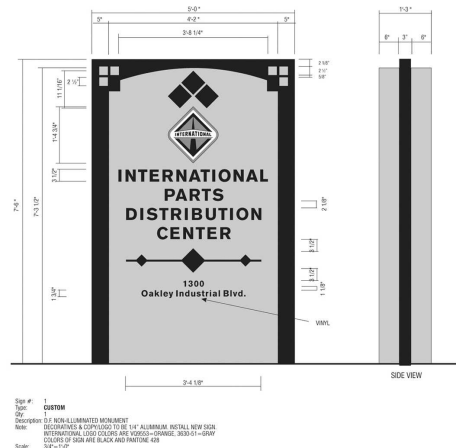
Sign 4 - Directional signage only



Stop Signs and Street Signs - Commercial areas



Sign 6 - Industrial sites over 15 acres (with or without stone base)



Sign # 1
 Title CUSTOM
 Description 1/4" NON-ILLUMINATED MOUNTMENT
 Notes DECORATIVE & EXPRESSED TO BE 1/4" ALUMINUM RETAIL NEW SCALE
 INTERNATIONAL LOGO COLORS ARE VIOLET-ORANGE. 3003-01-GRAY
 COLORS OF SIGN ARE BLACK AND WHITE. 001
 Scale: 3/4"=1'-0"